

SPECIFICATIONS

Rausch / Material & Maintenance

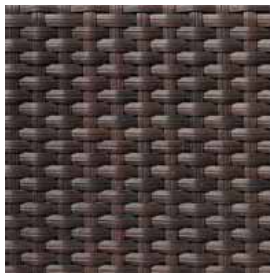


Shakes Road, Nairne SA 5252
P: 08/8388 6126
E: sales@flowergarden.com.au
www.flowergarden.com.au

Partly aluminium frames with Hularo covers, partly teak frames with Raucord covers; all covers are weatherproof and have an irregular colour finish to create a natural effect.

Both Hularo and Raucord are high quality synthetic fibres. However, we have to point out that there are slight differences in the colours of these weaving materials.

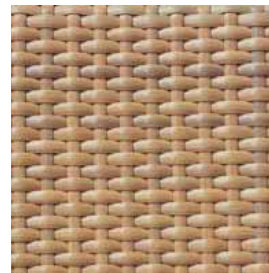
Hularo & Raucord



Mocca 6mm



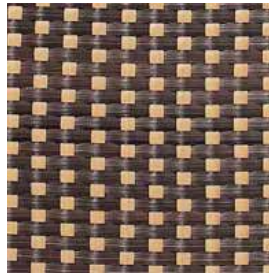
Light Brown 6mm



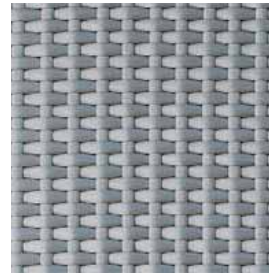
Natural 6mm



White-wash 6mm



Bicolor 6mm



Silver-shimmer 6mm



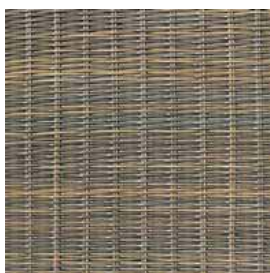
Coffee 8mm



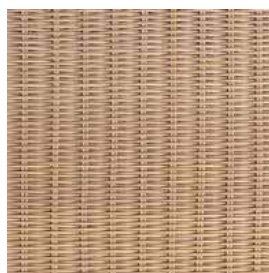
Ribbed natural 8mm



Silver shimmer 13mm



Fineweave reed 2.2mm



Fineweave natural 2.2mm



Fineweave mocca 2.2mm

SPECIFICATIONS

Rausch / Material & Maintenance



All Beach Club tables as well as the table Lakeland and the console Tampa are provided with a top of 6mm thick clear glass which rests on the wickerwork.

For the table collection Ocala a choice of tops of 10mm thick frosted glass or of 13mm thick dark Impala granite, all resting on top, is available.



Maintenance

Aluminium furniture:

Aluminium parts can be cleaned without any problem using a mild detergent and a sponge. You can repair small scratches on the lacquer with a special lacquer pen. In winter, we recommend that the furniture is stored inside because water residue in the aluminium tubes can cause structural damage in the event of frost. (If the furniture is stored outside, ensure that it is stored upside down in the event of frost).

Teak furniture:

Teak is a high-quality hardwood that has been used for centuries in the manufacture of ships, ship's planks and outdoor furniture. Its dense structure and high oil/rubber content prevent the wooden parts from expanding, contracting or becoming distorted, which means that it is weather resistant. All teak parts in outdoor furniture are untreated. Due to a natural process, the teak furniture develops a silver-grey patina after only a few months outside. However, this does not impair the quality of the wood and is a characteristic feature of the material. If you accept the grey patina, light soiling can be removed with water and a brush. To remove heavier soiling and stains caused by environmental influences, we recommend using a teak cleaner. Apply the cleaner to the surface by scrubbing with a stiff brush and then rinse with water. If you wish to restore the honey-brown natural colour of the wood, we recommend that you treat it subsequently with a teak protector. The wood must be 100% dry when this treatment is carried out. The teak protector is environmentally-friendly, non-oily and is absorbed by the wood. The protector helps the wood to retain its natural colour for longer. We recommend one treatment per year.